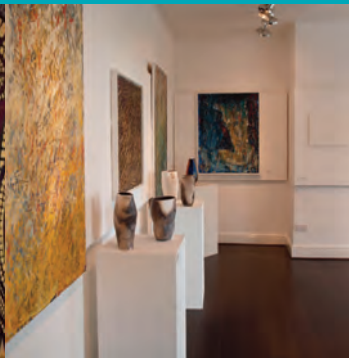
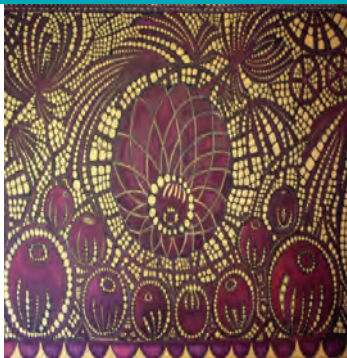


The Lally Gallery

Erewash Museum

www.erewashmuseum.co.uk



We are pleased to present our 2012 Lally Gallery Programme providing information on our displays and exhibitions for the year.

The Lally Gallery is an accessible and engaging space set within the historic museum building in Ilkeston Town Centre. Erewash Museum, Derbyshire Museum of the Year 2011, is an award winning attraction with FREE admission and is open Tuesday Thursday, Friday and Saturday 10am to 4pm, last admission is at 3:30pm.

5 JAN - 9 FEB

Victoria Brown 'LOSING LACE'

Artwork inspired by the local lace industry. Victoria has strong family connections to lace manufacture in Derby and Nottingham, and her work aims to celebrate the past success of the industry and highlight the sense of loss felt by its decline.

**14 FEB - 2 MAR
6 - 23 MAR**

Ilkeston Arts and Camera Club 95th annual exhibition -

An opportunity to view

artwork and photography produced by members of the club. The club was formed in 1902 to encourage and develop the fine arts, and bring together those interested in them.

3 - 27 APRIL

Ilkeston Photo 2000 annual exhibition

(Part 1)

The first of two photographic exhibitions to be held in The Lally Gallery by club members.

The Lally Gallery

Erewash Museum



3 MAY - 24 JULY

Snap Time

An exhibition by Erewash Museum exploring the history of coal mining, showcasing artefacts on loan from The National Mining Museum.

31 JUL - 10 AUG

Ilkeston Photo 2000 annual exhibition

(part 2)

16 AUG - 14 SEPT

Ian Fink, fine art exhibition

A unique and exciting exhibition of images from local artist Ian Fink.

20 SEPT - 16 OCT

Cartoonist and Illustrator Andy Gilbert

Exhibits of Sports themed artwork to celebrate the 2012 olympics

23 OCT - 16 NOV

Keith Wright-Photograph Exhibition

Inspired by the natural landscape viewed from a different perspective

22 NOV - 15 JAN

Collection preview

An exhibition by Erewash Museum displaying work from the museum's

collection including new acquisitions.

Dates and specific details are subject to change.

Please contact us to confirm details prior to your visit if you are wishing to view a specific exhibition.

To find out more please contact Erewash Museum, High Street, Ilkeston, Derbyshire, DE7 5JA
Tel: 0115 9071141
email museum@erewash.gov.uk or visit www.erewashmuseum.co.uk